

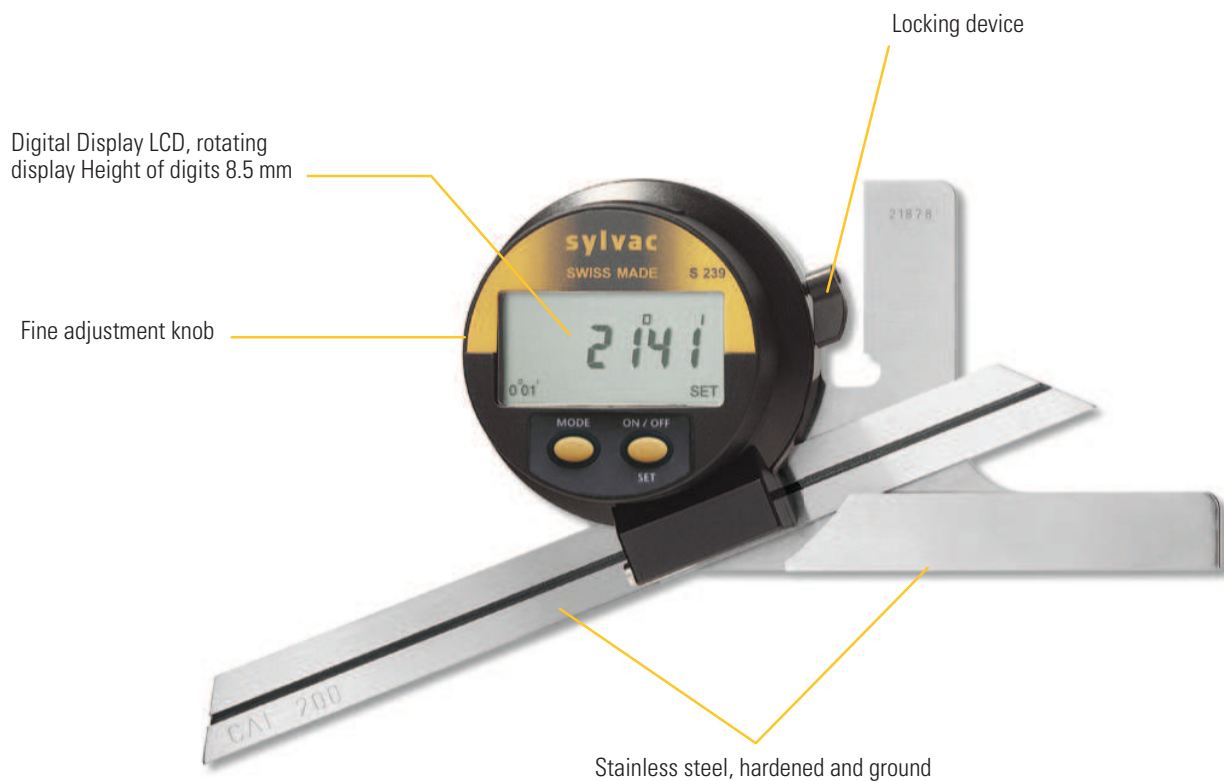
Protractor

S239

DESCRIPTION

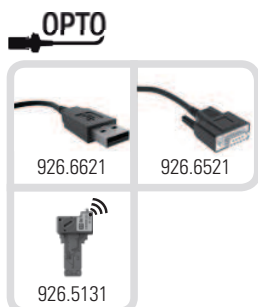
- Measuring range 1x360°, 2x180°, 4x90°
- Mechanical parts in stainless steel

A

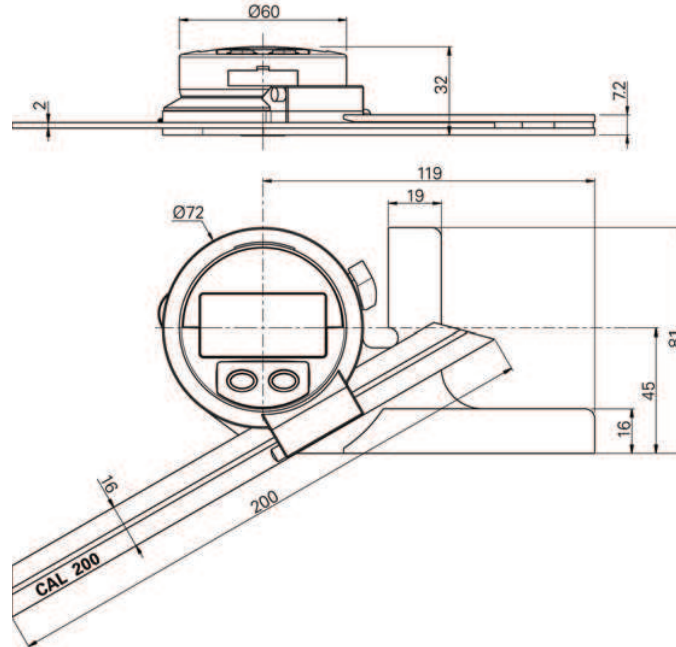


SWISS MADE

WATER RESISTANT



A DIMENSIONAL DRAWING



TECHNICAL SPECIFICATIONS

	820.1700
Measuring range	0-360°
Max. Error	4 minutes of arc
Resolution	1 minute of arc / 0.01°
Max. rotation speed	1080° / sec
Protection rating according to IEC 529	IP51
S_Connect : Opto	USB / RS232 / Wireless ¹⁾
Selection of measuring direction	●

¹⁾ see cables chapter

BASIC INSTRUMENT

- Instrument according to technical specifications
- Wooden box ²⁾
- Scale 200 mm (820.2420)
- Lithium battery CR2032 included
- Instruction manual

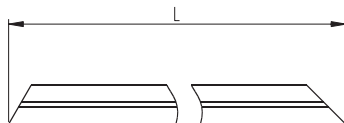
²⁾ Fumigated, compatible ISPM 15 and NIMP 15

Protractor

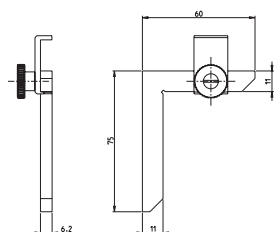
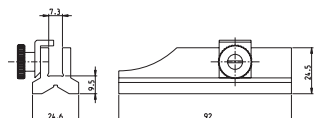
S239

ACCESSORIES

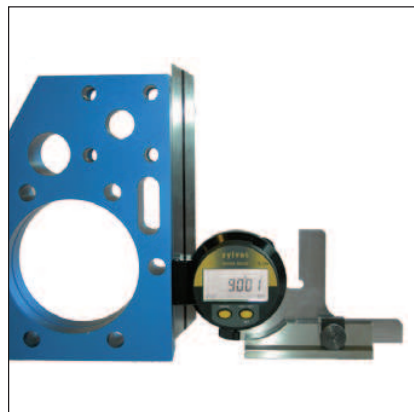
A



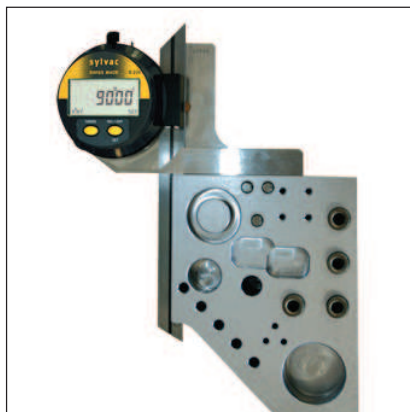
820.2420	Scale L 200 mm
820.2430	Scale L 300 mm
820.2450	Scale L 500 mm
820.2460	Stand for vertical application and small angular measurements
820.2461	Square for small angular measurements



APPLICATIONS



Measurement with accessory type 820.2460



Standard measurement



Measurement with accessory type 820.2461