

	FUNCTIONS	
	SYLVAC REFLEX SCAN	SYLVAC REFLEX SCAN+
Automatic measurement of the main features (diameters, lengths, angles, radius)	●	●
Automatic parts / program recognition	●	●
Off-line programming		option
Advanced dust filtering		●
Statistic view		●
CAD import		●
Reports editor	●	●
Data export	●	●
SPC basic calculations	●	●
Script function		option
SPC software	On request	On request
Access management - security level	1	multiple

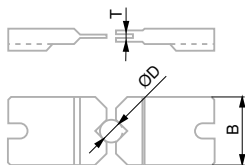
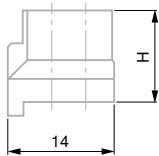
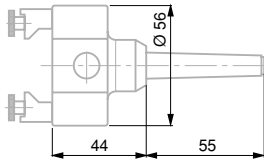
	GEOMETRICAL TOLERANCING - FEATURES SUMMARY	
	SYLVAC REFLEX SCAN	SYLVAC REFLEX SCAN+
Diameters	●	●
Lengths, heights, distances	●	●
Angles, chamfers	●	●
Radii	●	●
Threads (parallel)	●	●
Threads (root detail, taper, multi-starts, ball screws, worm screws, special threads)		●
Perpendicularity		●
Form deviation		●
2 and 3D alignment of the parts (axis correction)	●	●
Rotational diameters	●	● advanced
Run out	●	● advanced
Concentricity	●	●
Roundness	●	●
Cylindricity	●	●
Across flats	●	●
Straightness	●	●
Interrupted parts (splines, turbines)		●

Optical measurement

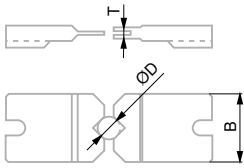
SYLVAC-SCAN

ACCESSORIES

Morse 2
SCAN 52 / F60



<p>902.6220</p>	<p>Two-jaw gripper External clamping for manual use</p>	<ul style="list-style-type: none"> Requires 902.6360
<p>902.6231 H=22</p>	<p>Raising blocks for external jaws, in pairs</p>	<ul style="list-style-type: none"> (Morse 1 requires 902.6220)
<p>902.6141 0-6 mm T=1.5</p>		
<p>902.6142 0-6 mm T=3</p>		
<p>902.6143 6-12 mm T=3</p>		
<p>902.6144 12-18 mm T=6</p>	<p>External jaws, in pairs</p>	<ul style="list-style-type: none"> For
<p>902.6145 18-24 mm T=9</p>		<p>902.6220</p>
<p>902.6152 0-6 mm T=6</p>		<p>(also for Morse 1)</p>
<p>902.6153 0-6 mm T=15</p>		
<p>902.6140 6-12 mm T=15</p>		



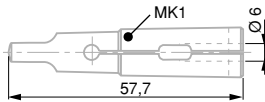
902.6154

Set with:
902.6141
902.6142
902.6143
902.6144
902.6145

External jaws,
in pairs

902.6141 : Jaws dia 0-6mm, T1=1.5mm
902.6142 : Jaws dia 0-6mm, T1=1.3mm
902.6143 : Jaws dia 6-12mm, T1=3mm
902.6144 : Jaws dia 12-18mm, T1=6mm
902.6145 : Jaws dia 18-24mm, T1=9mm

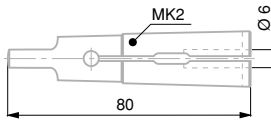
•



902.6250

Center
adapter with
a 6 mm dia.
coupling bore

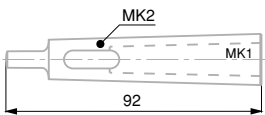
Only for Morse 1



902.6251

Center adapter
with a 6 mm dia.
coupling bore

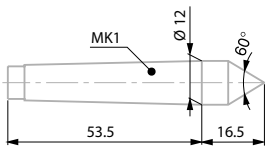
•



902.6360

Reduction
sleeve,
Morse 2 to 1

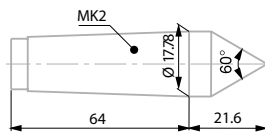
•



902.6000

Extra male center, 10 mm
(2 items provided with
SYLVAC-SCAN 25)

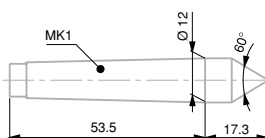
Only for Morse 1



902.6202

Extra male center, 17.78 mm
(2 items provided with SYLVAC-SCAN F60 and
SYLVAC-SCAN 52 Reflex-Click)

•
Standard



902.6203

Drive centre
(Diamond coated 10 mm)

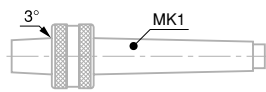
Only for Morse 1

Optical measurement

SYLVAC-SCAN

ACCESSORIES

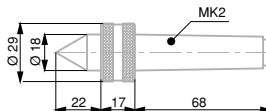
Morse 2
SCAN 52 / F60



902.6160

Rotation center with a B12 male taper plus a Morse 1 taper shank
(For added sleeves 902.6206/902.6207)

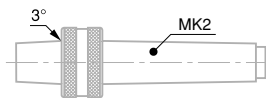
Only for Morse 1



902.6161

Rotation center, Morse 2
(1 item provided with SYLVAC-SCAN F60 and SYLVAC-SCAN 52 Reflex-Click)

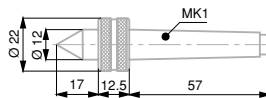
•
Standard



902.6162

Rotation center with a B18 male taper plus a Morse 2 shank

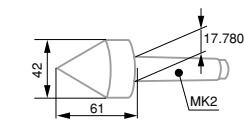
•



902.6163

Rotation center, Morse 1

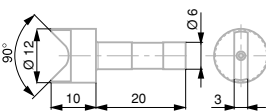
Only for Morse 1



902.6380

Rotation center, Morse 2

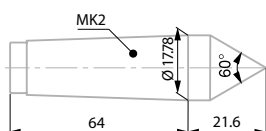
•



902.6204

Female center, 10 mm dia.

•
Requires 902.6251
(also for Morse 1, with 902.6250)

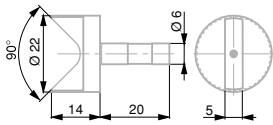


902.6212

Extra male center, 17.78 mm, diamond coated
(1 item provided with SYLVAC-SCAN F60 and SYLVAC-SCAN 52 Reflex-Click)

•
Standard

Morse 2
SCAN 52 / F60

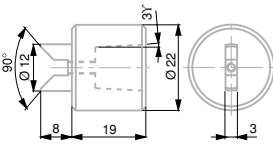


902.6205

Female center,
20 mm dia.

•
Requires
902.6251

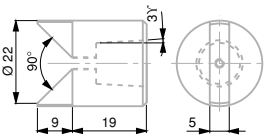
(Morse 1 requires 902.6250)



902.6206

Female center,
10 mm dia.
Also with internal
B12 taper

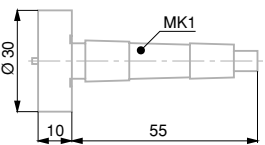
*Only for Morse 1
(requires 902.6160)*



902.6207

Female center,
12 mm dia.
Also with internal
B12 taper

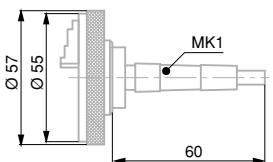
*Only for Morse 1
(requires 902.6160)*



902.6208

Platten,
30 mm dia.

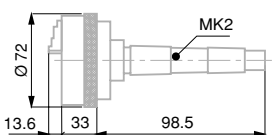
Only for Morse 1



902.6300

3-jaw chuck, clamping range 1÷15 mm
(Clamping capacity: outside 1÷15 mm
inside 11÷26 mm)

•
Requires
902.6360
(also for Morse 1)



902.6301

3-jaw chuck with Morse 2
taper shank, clamping range 2÷50 mm
(Clamping capacity: outside 2÷50 mm
inside 23÷50 mm)

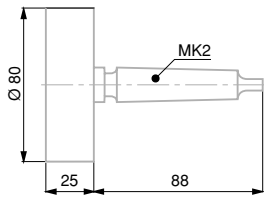
•

Optical measurement

SYLVAC-SCAN

ACCESSORIES

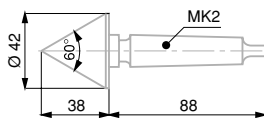
Morse 2
SCAN 52 / F60



902.6209

Platten,
80 mm dia. with a
Morse 2
taper shank

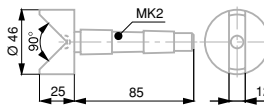
•



902.6210

Drive centre, Ø 40 mm.
Diamond coated
with a Morse 2 taper shank

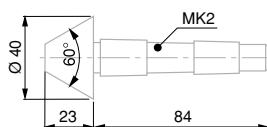
•



902.6340

Female centre, 40 mm dia.
with a Morse 2 taper shank

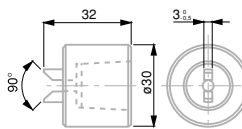
•



902.6341

Male centre, 15-40 mm dia.
with a Morse 2 taper shank

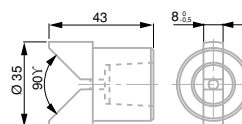
•



902.6310

Female center, 10 mm dia.,
with a B18 internal taper

•
Requires
902.6162

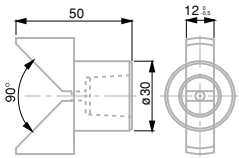


902.6311

Female center, 30 mm dia.,
with a B18
internal taper

•
Requires
902.6162

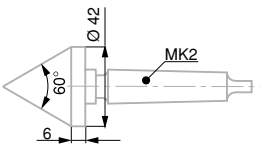
Morse 2
SCAN 52 / F60



902.6312

Female center, 45 mm dia.,
with a B18
internal taper

•
Requires
902.6162



902.6410

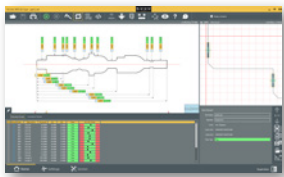
Drive centre - diamond coated,
42 mm dia. max.

•



902.7015

Reflex SCAN+ Offline Software



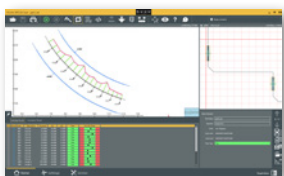
902.7016

Reflex SCAN+ Script programming



902.7017

REFLEX-SCAN+ Automation software module









902.7018

REFLEX-SCAN+ CAD compare software

Optical measurement

SYLVAC-SCAN

ACCESSORIES

			SCAN 52	SCAN F60
	902.6012	Gold demo part	•	•
	902.6013	Gold demo part for threads	•	•
	902.6600	Table for Sylvac SCAN F60 (85x85x70mm)		•
	902.6601	Furniture for Sylvac SCAN F60 storage for PC, drawer with lock and arm for keyboard and screen.		•
	902.6605	Height-adjustable table (71-1140mm) for keyboard, screen and mouse (80x60)		•
	902.6607	Accessories tidy insert for drawer (combined with 902.6601)		•
	902.6608	Pneumatic tailstock		•



Our Sylvac Scan range can be fully automated with a robot that can load all your workpieces for you directly on the machine for measurement. Available on request.